

Tablet Sampler

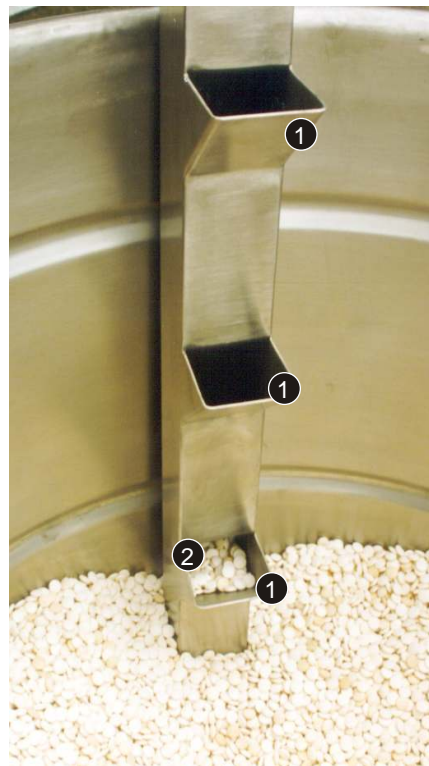
Designed to take large samples of tablets, pellets, capsules and granules from a container as the product receiving container is filled.

Type: Cross sectional composite sample

Material: 316 stainless steel, satin finish

Operation: Place the sampler in the tablet collecting container. Fill the container with tablets/capsules. The sampler will automatically fill with product as the container is filled. Remove sampler.

Note: Place the sampler in the container before it is filled with tablets

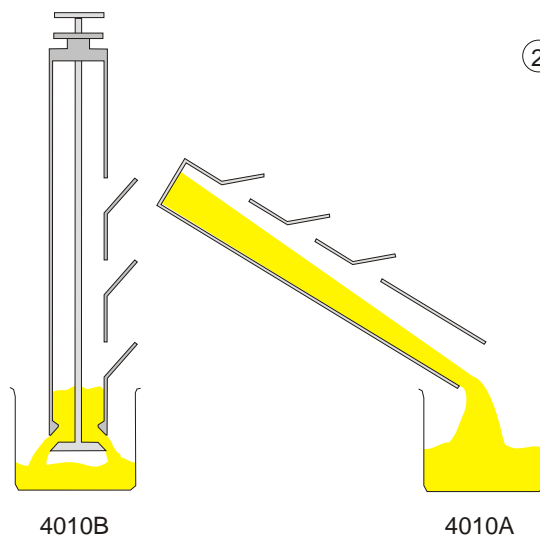
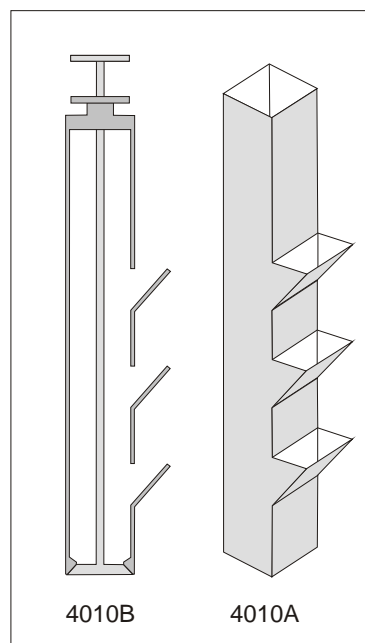


Which Design?

The Multilevel Tablet Sampler is available in two forms.

Type 4010A - Standard design, the bottom end of the sampler is welded closed. The sampler needs to be inverted to be emptied.

Type 4010B - GMP correct design. The sampler has an open bottom to allow easy cleaning. The end is stoppered by a stainless steel plug.



- ① Sampling Points at different heights
- ② Sampler gradually fills up with tablets as container is filled



Part No.	Description	Length	No. of sampling points	Max. Sample Volume
4010A-01	Standard design	1000mm	4	1500ml
4010B-01	Easy clean design	1000mm	4	1500ml