

Silo Rover

Bulk Sampling from Silos or Tankers



Sampling from road tankers and silos has always been very difficult, that was until the arrival of the Silo Rover.

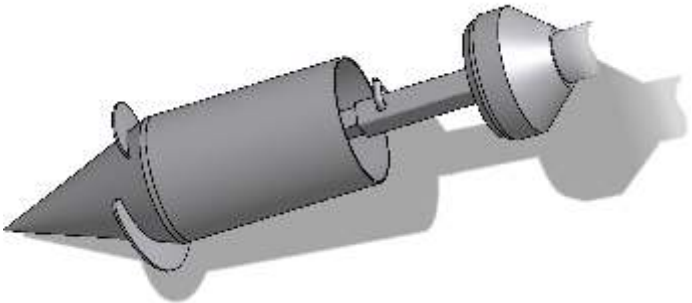
- Heavy duty stainless steel construction
- Simple to operate
- 2m length
- Scroll end to aid insertion of sampler into dense powders or granules
- 1 litre sample volume
- Weight of empty sampler: 10kg



Control to open the sampler



Stand to hold Sample Collecting Chamber



Operation

- The Silo Rover is quick and easy to operate.
- Work sampler into the powder or granules.
- Open chamber which will allow powder to flow in.
- Close chamber and remove sampler.



Part No.	Nominal Capacity	Diameter
1076A-2000	1 litre	70mm
1076S-1	Stand to hold Sample Collecting Chamber	